

KOMPAKT PREPARATION UNITS

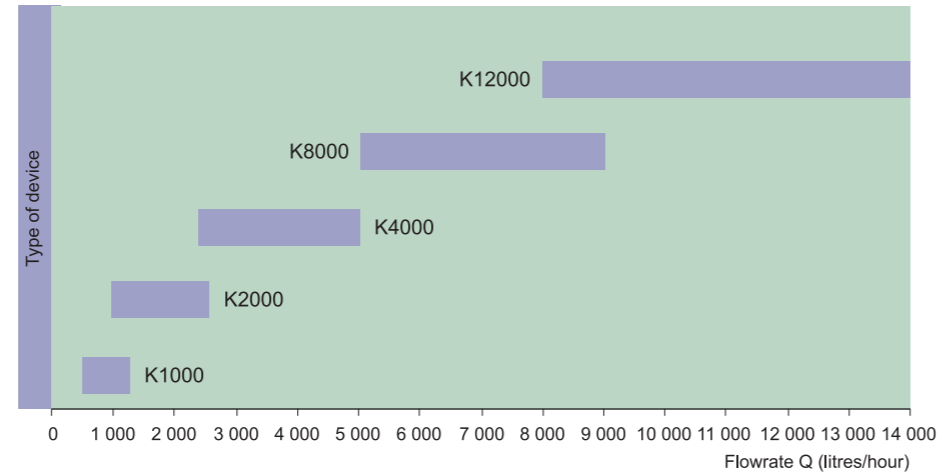
Three-chamber system

Three-chamber stations are produced in five sizes marked with symbols of K1000, K2000, K4000, K8000 and K12000. The first phase containing perfect mixing is completed with the maturing tank and the storage tank. The variability is extended with a possibility of the intermittent time mode of mixing in the last two phases. The unique solution is applied in the dispersant for pre-wetting and in the hopper of the screw dosing device for homogenisation. Vertical propeller stirrers contain only plastic parts of high rigidity.

The control system coordinates operations of all parts of the unit and provides for:

- access through the alphanumeric display and the keyboard
- code-protected access of operators to the setting menu
- changes of concentration just through entering the required value in percentage
- displaying of the balance of consumption of the concentrate and the solution
- displaying of the hours of run
- displaying of failure messages and blocking conditions (min. levels of the solution and the concentrate)
- outputs to the control of filling of the hopper, clarification of the silo, dedusting filter
- control of heating of the output chamber of the dosing device
- control of running time of stirrers
- easy calibration of the dosing device after the concentrate is changed

Field of application of K1000-12000 flocculation stations



Main parameters: Polymeric flocculant 0.02 – 1.5%

Symbol	Nominal output (litre/hour)	Suggested range (litre/hour)	Dimension l x w x d (mm)	Installed load 400V, 50Hz, TNS (kW)	Water connection (mm)
K1000	1,000	500 – 1,200	2,200 x 800 x 1,800	2	DN25
K2000	2,000	1,000 – 2,500	3,150 x 1,150 x 2,000	2.8	DN25
K4000	4,000	2,400 – 5,000	3,150 x 1,500 x 2,100	5	DN32
K8000	8,000	5,000 – 9,500	4,500 x 1,700 x 2,500	7	DN40
K12000	12,000	8,000 – 14,000	5,500 x 1,800 x 2,500	8.8	DN50

KOMPAKT PREPARATION UNITS



Kompakt preparation units

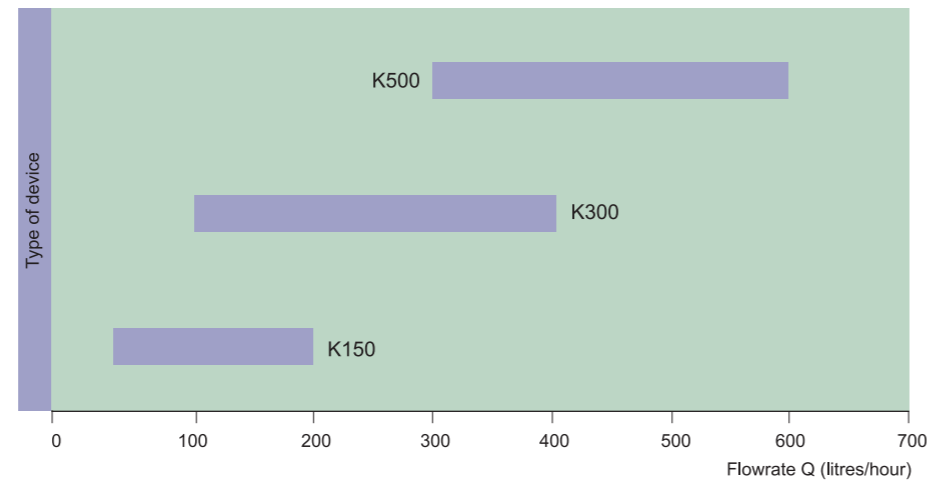
Kompakt preparation units are intended for continual preparation of chemical solutions. The main field of application is preparation of polymeric flocculants and coagulants. In addition it allows preparation of solutions of milk of lime, bentonite, dry activated carbon, pickle alum.... It is possible to use dry or liquid concentrates. Single-chamber systems are used for preparation of smaller quantities and three-chamber systems for bigger quantities.

Single-chamber system

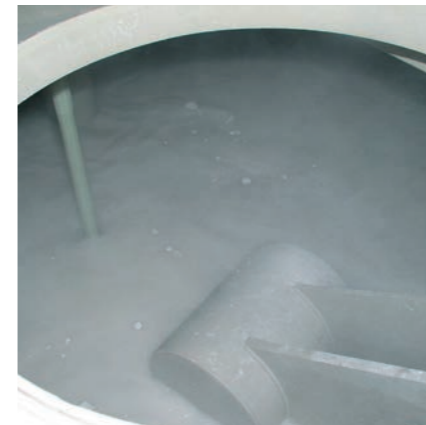
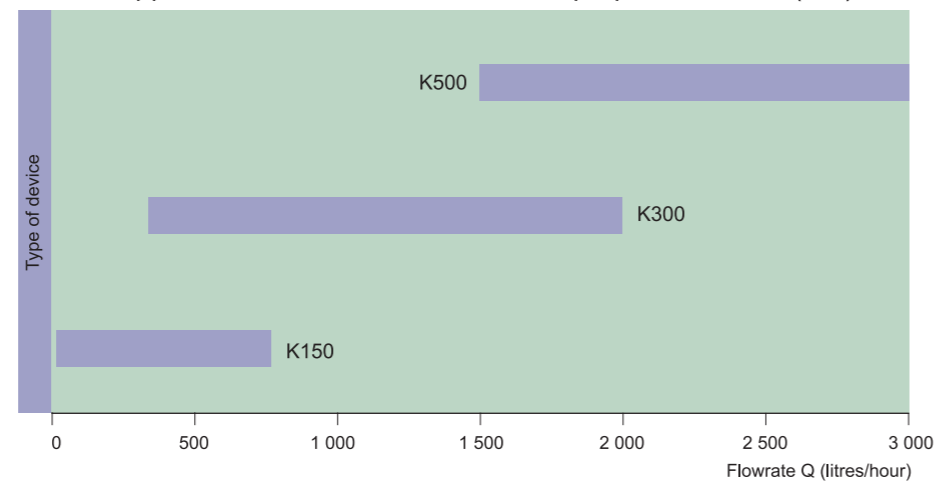
Single-chamber stations are produced in three sizes marked with symbols of K150, K300 and K500. The control system is identical for all versions of preparation units. The field of application of single-chamber stations ranges from 0.05 up to 1.5% for polymeric flocculants. The field of application is extended up to 10% concentration for milk of lime. Coagulants can be prepared up to 100% concentration.



Field of application of K150-500 stations for preparation of flocculants



Field of application of K150-500 stations for preparation of Ca(OH)₂



Main parameters:
Ca(OH)₂ 0.02 – 10%

Symbol	Nominal output (litre/hour)	Suggested range (litre/hour)	Dimension l x w x d (mm)	Installed load 400V, 50Hz, TNS (kW)	Water connection (mm)
K150	150	20 – 800	Φ 800 x 1,950	0.9	DN25
K300	300	500 – 2,000	Φ 1,100 x 1,950	1.4	DN25
K500	500	1,500 – 3,000	Φ 1,300 x 2,200	2	DN32